



PROJECT PROFILE

Lowry Hill Colonial



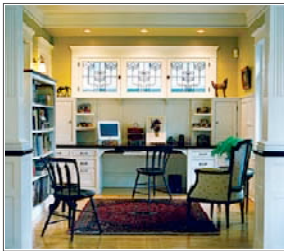
Project Type: Addition & Renovation

Location: Minneapolis

A seamless weaving of new into existing was the guiding principle while adding to this 1904 Colonial-revival-style four-square. A continuous line of vision through the first floor spaces creates the desired open atmosphere while architectural detailing maintains the appropriate scale from room to room. Period details and materials were fastidiously researched and recreated.



The client had an abundance of formal entertaining space up front, but sought a gathering space for family that was oriented to the backyard. The solution is a half-round family room that puts the occupant virtually in the back yard. This space is an excellent solution to accommodate for large groups in proximity to the kitchen. The reconfigured rear entry features storage for outerwear where there had been none before. Alongside the eating and entertaining areas, a new study was created.



On the third floor, converting two small maids' rooms into a bed alcove allows for a cedar walk-in closet and a living room-sized sitting area. The new bath features a terrific linen cabinet, twin pedestal lavatories, a bathtub and a separate shower.

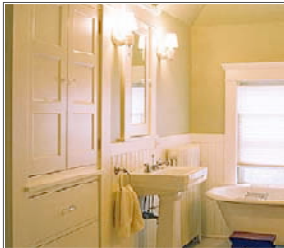


Photo 2 courtesy of Alex Steinberg.

Featured in *Old House Journal*, May/June 2004

Featured in *Architecture Minnesota*, March/April 2002

Featured in *Midwest Home & Garden*, February/March 2002

Honored with an AIA Honor Award for an Addition & Remodeling, 2001

Honored with an ASID Award for Residential Design, 2001