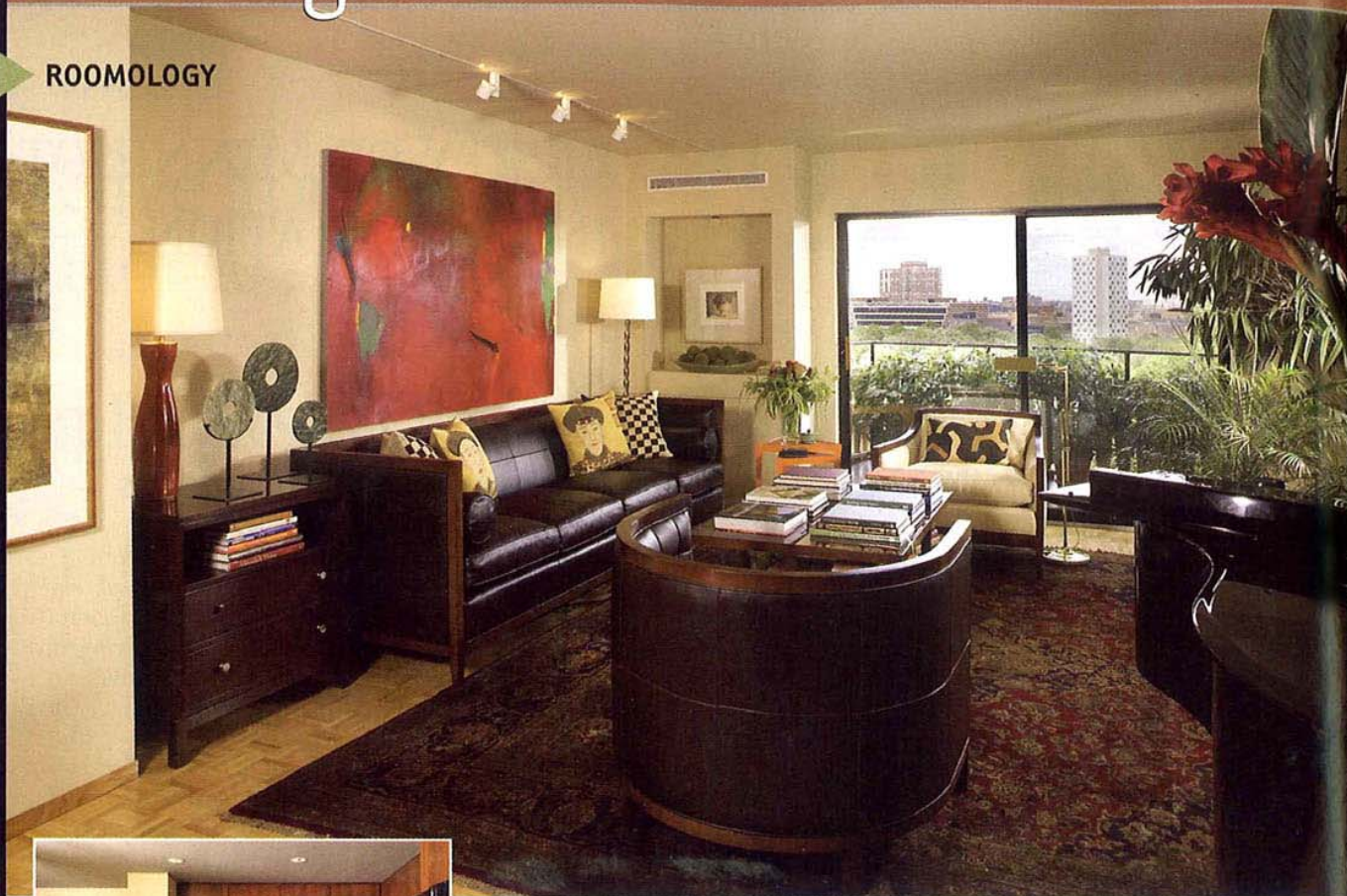


ROOMOLOGY



This chic Manhattan-style condo offers a Minneapolis skyline from its treetop perch.

Project: Loring Park Condominium
Designer: Mark Nelson, Allied Member ASID, AIA
Firm: David Heide Design Studio, Mpls., 612-337-5060, dhdstudio.com

When the owner purchased this Summit House condominium in downtown Minneapolis, the space contained many small, enclosed areas, which made it feel cramped and limited the view of Loring Park and the downtown skyline. “The design concept was to completely remodel the space, establishing an

open, modern, and more cosmopolitan aesthetic,” says designer Mark Nelson. The end result is a captivating space that is appropriate for modern living, even though the building itself is nearly forty years old. “It has a New York sensibility,” Nelson adds, “with post-card vistas from nearly every spot in the condominium.”

The kitchen and living spaces now flow together—and a lowered ceiling in the kitchen gives the area its own identity and adds intimacy to the space. Nelson says the addition of a steel blue painted ceiling and lighter-toned wood flooring “offers visual contrast that is distinct, but not jarring.” With its clean lines, smooth surfaces, and rich, dark tones, the kitchen “strikes a sophisticated, contemplative counterpoint to the bright lights and natural world seen through the windows on the other side of the living space.”

The modern art and furnishings were chosen for their sophistication and classic lines, but also with comfort in mind. “The owner loved contempo-

We Asked Mark

What excited you most about interior design?

Great design builds on classic elements and the timeless respect for both form and function. This includes the synthesis of architecture and interior design. Look at a Frank Lloyd Wright building, for example, and you’ll see each aspect of design informing the other, creating a consistent, coherent and compelling aesthetic. From the landscape to the structure to the interior, every element of a site and a space should help contribute to the narrative. My design interests include historic preservation and the integration of historic precedent into new designs.



What are some of your favorite local sources?

Retail sources include Lightworks in the North Loop neighborhood, C.W. Smith Antiques [Mpls.], and Sunny Sky on Grand Avenue. My top show rooms include Baker, Knapp & Tubbs, Fantasia, and Aubry Angelo, all at International Market Square.

rary and modernism, but it was important to him that the space not be too austere,” Nelson says. The final selections offer a touch of color and refined whimsy, which completes the clean feel of this urban home. —J. H. O.