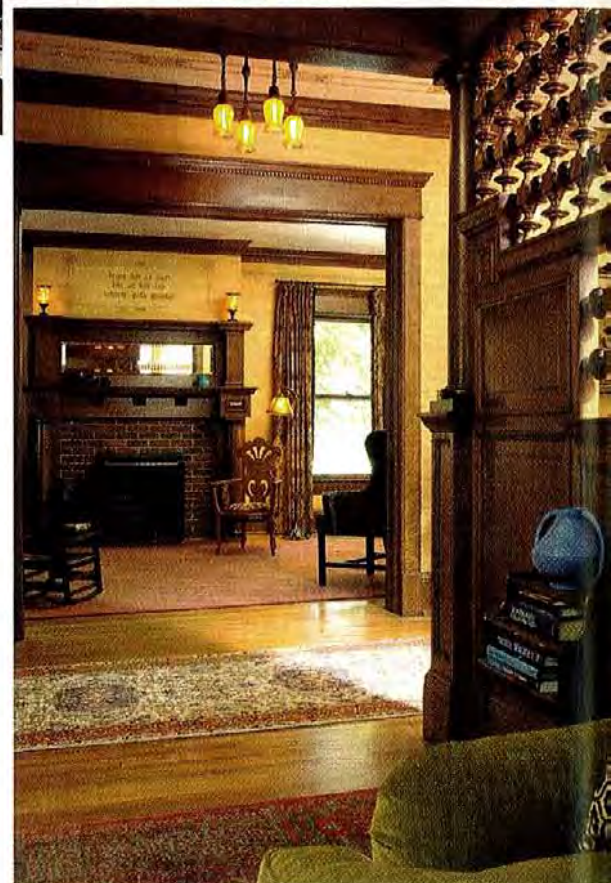


## [Charming Crocus Hill]

**Design Challenge:** To return as many original elements as possible to the contiguous spaces of the living room, stairway, parlor, and dining room, which had been reduced, altered, or removed in a previous “modernization” of this historic home.

**Professional Solution:** Through rediscovery, and some serious sleuthing, the design team used clues from the home to guide the project to the desired outcome. Two elements of the home that had been significantly altered were the original fireplace surround and a wooden screen separating the stairway hall

from the parlor. Both had been removed years ago. The designers discovered the nailing pattern of the original stair screen and used the design of the original balusters on the other side of the stairs to create a new screen to fit the pattern. Not only had the original mantel been removed, the entire room had been painted white. After stripping away a portion of the paint, the original outline of the surround could be seen. Using materials matching those found elsewhere in the residence, the fireplace was restored to its original scale and splendor, making it a welcoming focal point once again. Other design elements, though perhaps more subtle,



further the timeless aesthetic of this home, including antique and restored light fixtures, decorative stencil, and thoughtfully selected furnishings that all became the finishing touches.

**FIRST PLACE:** Historic Restoration

**FIRST PLACE [TIE]:** Design Is In The Details

**Designers:** David Heide, Allied ASID, AIA Associate, and Mark Nelson, Allied ASID, AIA

**Firm:** David Heide Design Studio